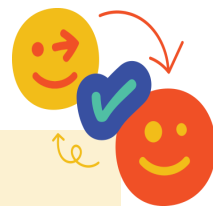




YEAR 1

STUDENT LANGUAGE EBOOK

LEVEL NATIVE SPEAKER



TASK ONE

ML. SL.1

Code 1.1, 1.2. 1.3

Independent
Station
Teacher station
Technology
station

- Answer the following questions
- Guess the rooms and items that you are seeing on the flashcards which the teacher is showing you?
1. Flash cards
 - Using your tablet, click on the following link [NS Flashcards](#) and name the items.
 2. Drag and Drop
 - Using your tablet, click on the following links. There are two drag and drop activities – [NS Drag and Drop](#), [NS Drag and Drop Part 2](#) Once you open the link you will find the words below the pictures where you will need to drag each word to the corresponding room image.

TASK TWO

ML. SL. 1

Code 2.3

Independent
Station
Teacher station

- Discuss with your teacher the different rooms that you learnt about.
- The teacher will read out the word and you are asked to listen closely to the word.
- Find the flashcard from your tablet
- Write down the word
- The teacher will now read you a sentence and you are to guess which room this is.
- Write a sentence about one of the rooms

TASK THREE

ML. SL. 1

Code 3.1, 3.2

Teacher station
Technology
station

- Using your tablet, click on the following links. There is one descriptive words activity – [Descriptive Words](#)
- Once you open the link you will find the words below the pictures where you will need to drag each word to the corresponding image.

TASK FOUR

Funded by the European Union. Views and opinions expressed are however those of the author(s) only and do not necessarily reflect those of the European Union or the European Education and Culture Executive Agency (EACEA). Neither the European Union nor EACEA can be held responsible for them [Project Number: 2022-1-CY01-KA220-HED-000088107].

ML. SL.1

Code 4.1, 4.2

Teacher station
Technology station
Independent Station

Answer the following questions

- Guess the rooms and items that you are seeing on the flashcards which the teacher is showing you?

1. Flash cards

- Using your tablet, click on the following link and name the items. – [Flashcards Native Speaker](#)

2. Drag and Drop

- Using your tablet, click on the following links. There are two drag and drop activities – [Drag and Drop Native Speaker Part 1](#), [Drag and Drop Native Speaker Part 2](#)
- Once you open the link you will find the words below the pictures where you will need to drag each word to the corresponding room image.



TASK FIVE

ML. SL.1

Code 5.2

Teacher station
Technology station

Answer the following questions

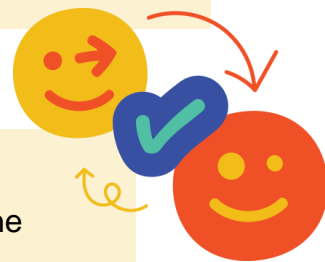
- Guess the school items that you are seeing on the flashcards which the teacher is showing you?

1. Simple Phrases

- Using your tablet, click on the following simple phrases links. There are two activities - [Simple Phrases Native Speaker Part 1](#), [Simple Phrases Native Speaker Part 2](#)
- Once you open the link you will find the words which you will need to drag to the correct sentence.

2. Dialogue

- Discuss with the teacher the dialogues you have heard.



TASK SIX

ML. SL.1

Code 6.1, 6.2

Teacher station
Technology station

Answer the following questions

- Guess the community places and things that you are seeing on the flashcards which the teacher is showing you?

1. Flash cards

- Using your tablet, click on the following link [Flashcards Native Speaker](#)
- Name the picture by writing the word.

2. Drag and Drop

- Using your tablet, click on the following links. There are two activities - [Drag and Drop Native Speaker Part 1](#), [Drag and Drop Native Speaker Part 2](#)
- Once you open the link you will find the words below the pictures where you will need to drag each word to the corresponding room image.



TASK SEVEN

M. SL. 1

Activity 7.1, 7.2, 7.3

Teacher station
Collaboration station

- Discuss with your teacher the different parts found in the community that you learnt about.
- The teacher will read out the word and you are asked to listen closely to the word.
- Find the flashcard from your tablet
- Write down the word
- The teacher will now read you a sentence and you are to repeat the sentence.
- Listen to the dialogue and the words.
- Write a dialogue about the community.

