



YEAR 3

STUDENTS LANGUAGE BOOK

LEVEL A2

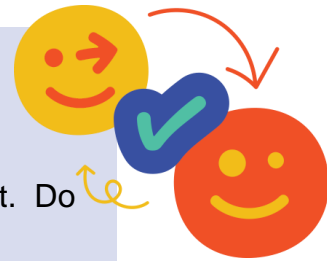
## TASK ONE

ML.SL.1,

Code 1.1, 1.2

Teacher Station  
Independent Station

- With the teacher discuss different types of transport. Do you know any words?
- Draw two types of transport
- Choose the correct label from the teachers lists
- Write the transport words next to your drawings
- Write a simple sentence. For example, "I drew a big blue bus and a red car."



## TASK TWO

ML.SL.3

Code 2.1, 2.2, 2.3

Teacher Station  
Independent Station  
Collaboration Station  
Technology Station

- The teacher will show you some transport words. Repeat the word.
- Match the word the teacher says with the image.
- Then match the word on the table with the image.
- With a classmate check each other's work.
- When the teacher tells you click on the link [Modes of Transportation](#) where they will write the name of the transport in the blank space.



### TASK THREE

ML.SL.3,

Code 3.1, 3.2

Teacher station  
Independent Station

- With the teacher discuss different transport methods
- Using the story below, fill in the gaps with your type of transport

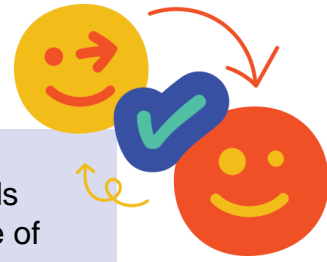
Once upon a time, there was a \_\_\_\_\_ [mode of transportation] (e.g., bicycle).

One sunny day, the \_\_\_\_\_ [mode of transportation] decided to explore a \_\_\_\_\_ [place] (e.g., forest).

During its journey, it met a \_\_\_\_\_ [noun] (e.g., squirrel). It was a beautiful day with \_\_\_\_\_ [describe the weather].

Finally, the \_\_\_\_\_ [mode of transportation] arrived back home and felt \_\_\_\_\_ [emotion] (e.g., satisfied).

- Share your story with the class.
- Now write a short story using a method of transport
- Share with the class.



### TASK FOUR

ML.SL.4

Code 4.1, 4.2

Teacher Station

Technological  
Station

- Together with the teacher name some different transport
- The teacher will describe the vehicle and you have to guess what it is.
- When the teacher tells you use the technological [Drag and Drop A2](#) where you match a vehicle definition with the corresponding name to reinforce learning.



## TASK FIVE

<b>ML.SL.3</b>	<ul style="list-style-type: none"><li>• Together with the teacher discuss different transport vocabulary</li><li>• Say the word together with the teacher</li><li>• Choose the correct word card according to the one the teacher gives you</li><li>• Draw your own transport picture and write a sentence example "I travel by bus to school."</li><li>• Share with your classmates</li></ul>
<b>Code 5.1, 5.2</b>	
Teacher station	
<b>Independent Station</b>	

## TASK SIX

<b>ML.SL.3</b>	<ul style="list-style-type: none"><li>• Together with the teacher mention different types of clothes we wear everyday</li><li>• When the teacher tells you you can click on these tools <a href="#">Accessories</a> , <a href="#">Basic Clothes</a> , <a href="#">Clothing Around the World</a> and write the word learnt below the picture.</li><li>• With the blank template of a person, you will design and colour an outfit.</li><li>• Share a sentence about the clothing example "I'm designing a red jacket."</li><li>• Write a sentence next to the clothes. "This is a blue dress with white stripes"</li><li>• Show your design to the class.</li></ul>
<b>Code 6.1, 6.2, 6.3, 6.4</b>	
Teacher station	
Independent station Technology station	

## TASK SEVEN

<b>ML.SL.3</b>	<ul style="list-style-type: none"><li>• Together with the teacher mention different types of weather.</li><li>• When the teacher tells you work through the <a href="#">Weather flashcards A2</a>, writing the word below the image of the weather condition</li><li>• Discuss clothes we wear in different weather. Match some cards and clothes and explain why example "I matched the umbrella with rainy weather because we use it when it rains."</li><li>• When the teacher tells you use the drag-and-drop tool <a href="#">Weather and Clothes A2</a> where you will match clothes to weather conditions</li></ul>
<b>Code 7.1, 7.2, 7.3</b>	
<b>Teacher station</b>	
<b>Technology station</b>	

## TASK EIGHT

<b>ML.SL.3</b>	<ul style="list-style-type: none"><li>• Tell the teacher any clothes that you know about. Can you describe them? Mention colours and designs.</li><li>• Choose some clothes and accessories and walk down the runway</li><li>• During your walk, describe your outfit like, "I'm wearing a striped red and white shirt, blue jeans, and a shiny belt."</li><li>• Ask questions to your classmates.</li></ul>
<b>Code 8.1, 8.2</b>	
<b>Teacher station</b>	
<b>Independent station</b>	



## TASK NINE

**ML.SL.3**

**Code 9.1, 9.2, 9.3,  
9.4**

Teacher station  
Technology station

**Independent  
station**

- Together with the teacher mention clothes you wear.
- The teacher will be showing you flashcards with words. Repeat the words after the teacher.
- Write the words of clothes learnt. Spell them when the teacher tells you.
- When the teacher tells you click on these tools and try and match the word with the picture. Technological Tools [Accessories](#) , [Basic Clothes](#) , [Clothing Around the World](#)
- Answer simple questions.

## TASK TEN

**ML.SL.3**

**Code 10.1, 10.2, 10.3**

Teacher station  
Technology station

**Independent station**

Together with the teacher mention different shops that you know about.

Together with the teacher you will guess which store items are found in different shops.

On your own, try and guess which shop sells them.

Together in class say a sentence about what you learned about the shop.

When the teacher tells you, you can use the [Vocabulary Flashcards](#) and the [Store Items Vocabulary Flashcards](#)

## TASK ELEVEN

ML.SL.3

Code 11.1, 11.2

Teacher station  
Independent station

- The teacher will show you how to play Bingo. Have you ever played it?
- The teacher will give you shopping bingo cards with different shops.
- You will be working on your own.
- When the teacher calls out a shop, mark it on your Bingo card.
- Repeat the shop's name after the teacher.
- When you form a line or a house, call out to the teacher and say the shops
- After the game remember the shops you marked.

## TASK TWELVE

ML.SL.3

Code 12.1, 12.2

Teacher station  
Collaboration  
station

- Together with the teacher, see which basic shopping words you remember. The teacher will ask you questions such as
  - How much is this?
  - I would like to buy?
- Here are some examples for you to read.  
Buying School Supplies at the Stationery Shop
  - Customer: "Can I buy two pencils and a notebook?"
  - Shopkeeper: "Sure, the pencils are €2, and the notebook is €3."
  - Customer: "Here is €5. Do I get any change?"
  - Shopkeeper: "Yes, here is your change, €1."  
Grocery Shopping
  - Customer: "I need bread and milk. How much do they cost?"
  - Shopkeeper: "The bread is €2, and the milk is €3."
  - Customer: "Do you have any discounts?"
  - Shopkeeper: "Yes, the bread is 50 cents off today!"
- Together with other students create a shopping scene.

## TASK THIRTEEN

ML.SL.3

Code 13.1,  
13.2, 13.3

Teacher  
station

- With the teacher pronounce the shop name
- With the teacher work together through the [Flash cards](#) by writing the word below the picture.
- Match the card items with the shop name example the item cards (e.g., bread, cake) with the shop name cards (e.g., bakery).
- When the teacher tells you click on the [Stores Drag and Drop Tool A2](#) and match shop items to their corresponding shop names for additional practice.
- Match the Cards (Students): Lay out the shop vocabulary cards on the display board or table, randomly mixed up. Ask students to match
- Repeat the words.

## TASK FOURTEEN

ML.SL.3

Code 14.1, 14.2

Teacher station  
Collaboration station

- With the teacher mention different shops you know about. What do we find in shops?
- Follow the teacher and answer the questions
- In pairs read the card the teacher gives you and role-play the scene.
- Present the shop dialogue to the class.