



YEAR 3

LANGUAGE EBOOK

LEVEL NATIVE SPEAKERS

TASK ONE

ML.SL.1,

Code 1.1, 1.2

Teacher Station
Independent
Station

- With the teacher discuss different types of transport in different parts of the world.
- Draw three types of transport from around the world.
- Write the transport words next to your drawings
- Write a short paragraph about that form of transport and how it is different to other transport.
- In class discuss whether transport will remain the same or change.
- Present your drawings and paragraphs to the class.

TASK TWO

ML.SL.3

Code 2.1, 2.2, 2.3

Teacher Station
Independent
Station
Technology
Station

- The teacher will show you some transport words from different countries. Repeat the word.
- Match the word the teacher says with the image.
- The teacher will give you a set of cards to match them within 5 minutes.
- When the teacher tells you click on the link [Modes of Transportation](#) where they will write the name of the transport in the blank space



TASK THREE

ML.SL.3,

Code 3.2, 3.3

Teacher station
Independent
Station

- With the teacher discuss different transport methods from around the world.
- Write a short story example
 - The Bus That Traveled Through Time - One day, a regular city bus drove through a strange tunnel and ended up in the past! It saw people using old-fashioned transportation. How did the bus help them get back to the present?
 - The Airplane and the Talking Birds - A large airplane was flying over the jungle when it heard birds speaking in a language it could understand. What did the airplane learn from the birds?
 - The Adventure of the Submarine - A curious submarine decided to dive deeper into the ocean than it ever had before. At the bottom, it found a hidden underwater city. What did the submarine discover in the city?
- Share your story with the partner and discuss what you wrote
- Share your story with the class.

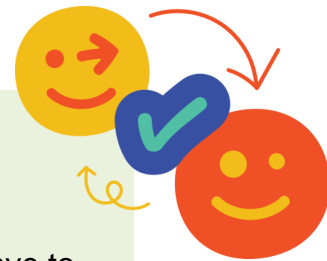
TASK FOUR

ML.SL.4

Code 4.1, 4.2

Teacher Station
Collaborative
Station
Technological
Station

- Together with the teacher name some different transport in different parts of the world.
- The teacher will describe the vehicle and you have to guess what it is.
- In groups try and guess the answer. For each correct answer you earn a point.
- When the teacher tells you use the technological Use the [Sentences for Modes of Transport](#) as a collaborative group task



TASK FIVE

ML.SL.3
Code 5.1, 5.2

Teacher station
Independent
Station
Collaboration
Station

- Together with the teacher discuss different transport vocabulary. Do you know of any different transport from around the world?
- Choose the correct word card according to the one the teacher gives you
- In pairs, create a short story which includes different transport. For example, "The tram travels through the city, while the rickshaw waits for passengers by the market."
- Present to the class

TASK SIX

ML.SL.3

Code 6.1, 6.2, 6.3,
6.4, 6.5, 6.6

Teacher station
Independent
station
Technology station

- Together with the teacher mention different types of clothes we wear every day. Do you know any clothes they used to wear in the past? What kind of clothes do people wear today? Do people from around the world wear the same fashion clothes?
- When the teacher tells you you can click on these tools [Accessories](#) , [Basic Clothes](#) , [Clothing Around the World](#) and write the word learnt below the picture.
- The teacher will give you a country and you are to design an outfit for that country.
- Present your outfit to the class.

TASK SEVEN

ML.SL.3
Code 7.1, 7.2,
7.3

Teacher
station
Technology
station
Independent
station

- Together with the teacher mention different types of weather and why we wear different clothes. Do different cultures wear different clothes according to the weather?
- When the teacher tells you work through the [Clothes around the world Drag and Drop](#)
- Discuss clothes we wear in different weather.
- Match some cards and clothes and explain why.
- Will the change in weather affect what we wear?

TASK EIGHT

ML.SL.3

Code 8.1, 8.2

Teacher station
Independent station

- Tell the teacher any clothes that you know about. Can you describe them? Mention colours, designs and accessories. Do you know of any clothes worn in different cultures.
- Be creative and choose clothes and accessories and walk down the runway. Try and choose a cultural outfit.
- During your walk, describe your cultural outfit. Describe what is special about your costume.
- Ask questions to your classmates. What did you like about their outfits? Do the clothes you wear show who you are?



TASK NINE

ML.SL.3

Code 9.1, 9.2,
9.3, 9.4

Teacher station
Technology station
Independent station

- Together with the teacher mention clothes you wear.
- Identify clothes that people wear from around the world.
- Write a sentence with the new words you learnt. For example, "For a festival in India, I would wear a colorful sari."
- When the teacher tells you click on these tools and try and match the word with the picture. Technological Tools [Accessories](#) , [Basic Clothes](#) , [Clothing Around the World](#)
- Discuss, does the weather effect what we wear?

TASK TEN

ML.SL.3

Code 10.1, 10.2,
10.3

Teacher station
Technology station
Collaboration station
Independent station

- Together with the teacher mention different shops that you know about.
- In a team, try and guess which shop sells them.
- Research and write a paragraph about what you learned about the cultural shop.
- Present it to the class

TASK ELEVEN

ML.SL.3
Code 11.1, 11.2

Teacher station
Independent
station

- The teacher will show you how to play Bingo. Have you ever played it?
- The teacher will give you shopping bingo cards with different shops from around the world.
- As a team when the teacher calls out a shop, mark it on your Bingo card.
- As a team, when you form a line or a house, call out to the teacher and say the shops
- After the game remember the shops, you marked.
- Discuss with the teacher the unique shops one finds and how important they are in the community.

TASK TWELVE

ML.SL.3

Code 12.1, 12.2

Teacher station
Collaboration
station

- Together with the teacher, see which shopping words you remember. Discuss
 - What polite language we can use when we have a problem when shopping?
 - Do you know about different cultural shops?
- Here are some examples for you to read.

Bargaining at a Market Stall

- Customer: "I like this scarf, but €15 seems a bit expensive. Can I get it for €10?"
- Shopkeeper: "How about €12? It's handmade and high quality."
- Customer: "Alright, I'll take it for €12. Thank you!"
- Shopkeeper: "You're welcome! Enjoy your scarf."

Resolving Issues

- Emma: Hello, I bought this dress yesterday, but there is a small tear in the fabric. Can I exchange it for a new one?
- Salesperson: I'm sorry to hear that. Do you have the receipt?
- Emma: Yes, here it is.
- Salesperson: Thank you. We can exchange it for a new dress or give you a full refund.
- Emma: I would like to exchange it for a new dress, please.
- Salesperson: Sure, let me get a new one for you.
- Together with other students create a shopping scene which addresses such situations.
- Present your scenario to the rest of the class.

TASK THIRTEEN

ML.SL.3

Code 13.1, 13.2,
13.4

Teacher station
Collaboration
station
Independent
station

1. Discuss with the teacher different shops and why they are important in our life. Discuss also different cultural shops that one could find.
2. Try working together through the **Flashcards** by writing the word below the picture.
3. Prepare a role play according to the teacher scenario.
4. Present your shop scenario to the class.

TASK FOURTEEN

ML.SL.3

Code 14.1, 14.2

Teacher station
Collaboration
station

- With the teacher mention different shops you know about.
 1. What do we find in shops?
 2. How do we behave when we are shopping?
 3. Do different cultures have different shops?
 4. Do you know of any such shops?
 5. Would they be different to our shops?
- In pairs read the card the teacher gives you and role-play the scene.
- Present the shop dialogue to the class.
- Give feedback to the group.